

# Operation Instructions

## Moving Type Human Figure Recognition Sensor

# Argus Eagle Eyes

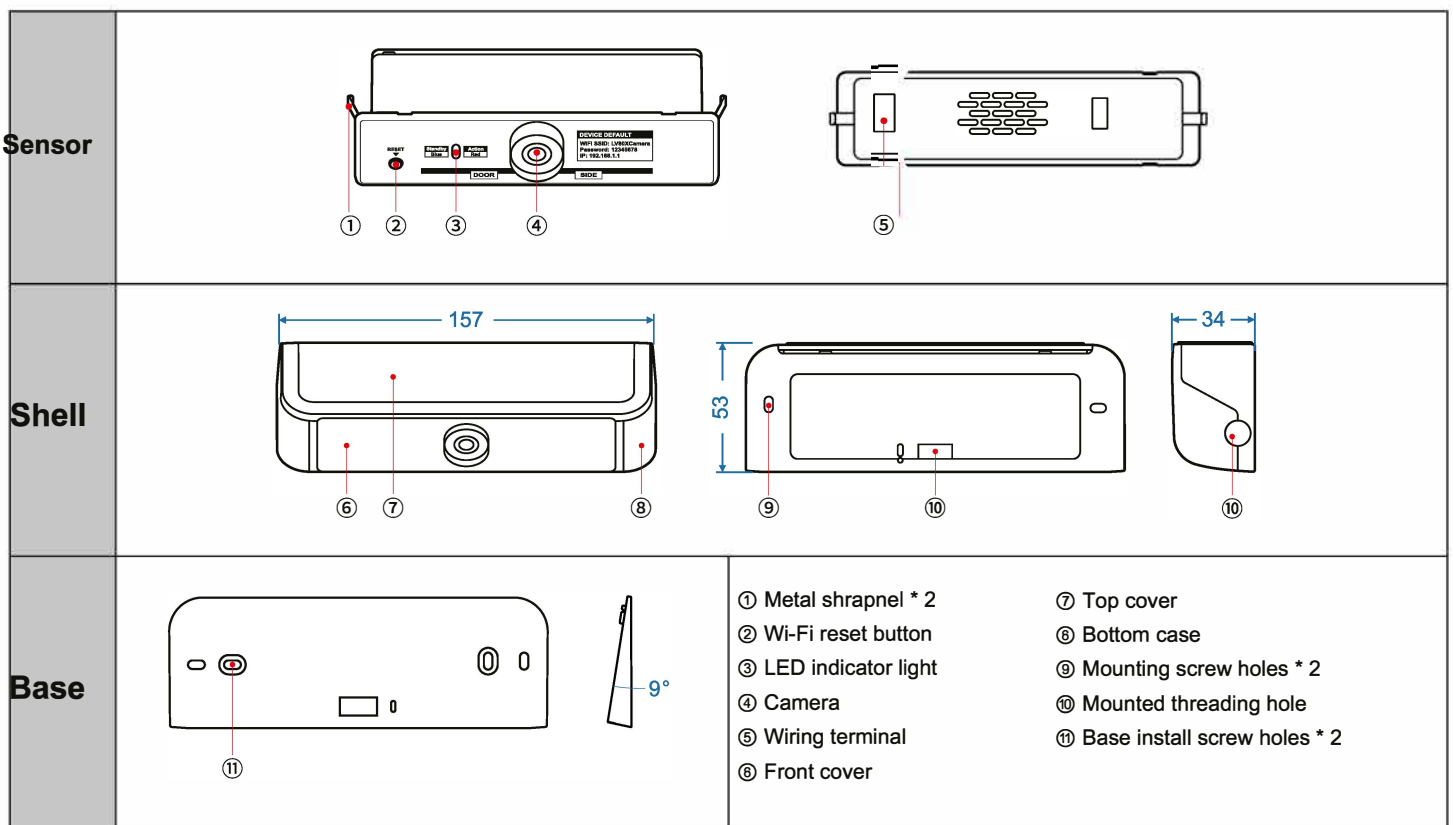


### 1 Safety Instruction

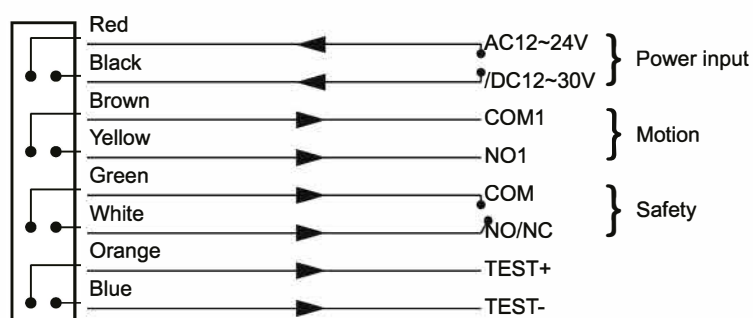


Thank you very much for purchasing this products, in order to use it correctly, please read this manual carefully before use it.

### 2 Product Overview



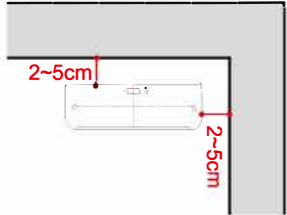
### 3 Wiring Diagram



## 4 Installation

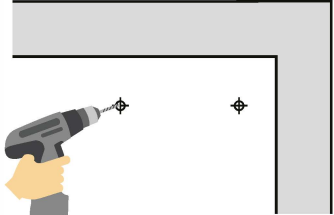
**[1]**

Place the positioning paper on the location to be installed.



**[2]**

Drill the mounting holes according to the mark on the door.

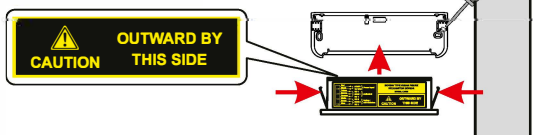


**[3]**

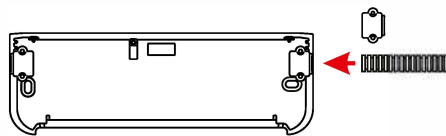
**Attentions**

The scanning range of this series of sensors is unidirectional, when installation on site, please put the "Outward by this side" sign towards the human figure induction direction.

Fix the sensor's bottom case by screws, tight the metal shrapnel on the both sides of the sensor, and place the sensor into the bottom case.

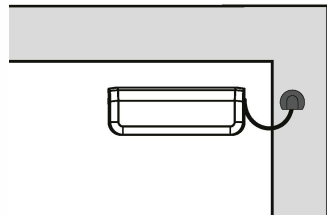


**[4]**



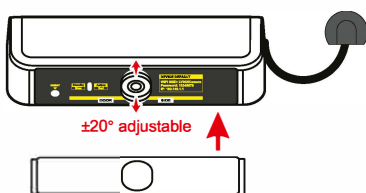
Put the connection wire of the automatic door machine into the matching hose, press it into the cable slot, and then cover the fixing bracket and fix it with screws.

**[5]**



Close the top cover, fixed the line with U-shaped, makes the door won't clip the line when it rotates.

**[6]**



The camera's angle with  $\pm 20^\circ$  adjustable, whole detection area will change. Then close the translucent front cover.

## 5 Adjustment

### Power-on Networking

After power-on, wait for 10 seconds for the start time of the internal program of the sensor. Until hear a buzzer voice that lasts 3 seconds, the device has created a Wi-Fi, please use your mobil phone or other devices to connect this Wi-Fi.

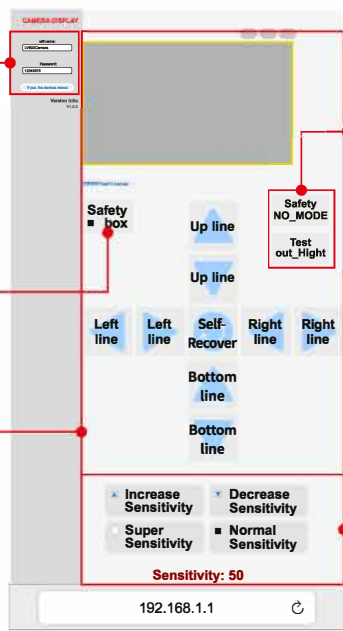
**Device default Wi-Fi name: LV80XCamera\_xxxx**(Randomly generate a 4-digit sequence), **Device default Wi-Fi password: 12345678**

After connected(please turn off the data network of your mobile phone), open your phone browser, enter and search **192.168.1.1** enter the current device's control interface.

### Control Interface

**Wi-Fi name and password change area**

Enter a new Wi-Fi name and password, click "change the account(confirm to restart)" key and the device will restart, new account will effective.  
NOTE: Wi-Fi name cannot contain special characters, and the password must be set at least 8-digit.



**Safety NO/NC Mode & Test out High/Low Switch**

Note: When the test function is not in use, the test signal input must be set to a high electrical level output, otherwise the sensor will not work properly.

Click to change the Safety box / Motion box, yellow color is the safety box, blue color is the motion box.

**Detection range adjustable area**

There is an detection area box in the monitoring screen. When in standby state, two keys in each direction control the edges corresponding to the detection area respectively. "Self-recover" key is to restore the factory default(whole detection area, and sensitivity is 50.)

**Sensitivity adjustable area**

Each time the sensitivity **increase/decrease** button is pressed, the sensitivity will increases / decreases by 10(the default sensitivity is 50), the higher the sensitivity, the more sensitive the detection, but the probability of misidentification also increases.  
**Super sensitivity** dual model recognition (recognition time about 200ms);  
**Normal sensitivity** single model recognition (recognition time about 100ms).  
Switching working mode will restart the device to take it effect (factory default super sensitivity mode)

## 6 Troubleshooting

Failures	Possible reasons	Improvements
LED indicator light off	The sensor is not connected to power supply	Check the cable connection, and whether power supply is normal
Red light is always on, but door won't be opened	Wiring fault	Check and adjust the wiring, re-power on
1, Detection isn't sensitive enough; 2, Object movement leads to false triggering.	Sensitivity is too low or too high	Adjust the sensitivity
People near to the doors, but activated/safety function don't work	Detection range adjustment deviation	Restore the default detection range and adjust it again



Due to the limitations of AI Neural Network deep learning, in some special scenes, the system will output certain confidence for some non-human figure objects (similar human figure), and it is possible to output signal. Please try to solve the problem by the following methods:

- 1, Rotate the position of the objects, may not be recognized as a human figure.
- 2, Reduce the sensitivity.
- 3, Adjust the lens angle of camera or adjust the detection selection area, so as to avoid the object appearing in the screen.

## 7 Technical Parameters

Detection function:	human figure activated, safety
Camera pixel:	HD 1080P
Response speed:	100ms
View angle adjustment:	±20°
LED indicator:	standby in BLUE, activated in RED, safety in RED light flashes
Power supply:	AC12~24V, DC12-30V
Standby Current:	130mA
Action Current:	220mA
Working temperature:	-20°C~60°C
Working humidity:	10%~90%RH
Installation height(max):	5 meters
Dimension:	157(L)x53(W)x34(H)mm

## 8 Packing list

NO.	ITEM	PCS	REMARK
1	Sensor	1	sensor, and 3 covers
2	Base	1	
3	Positioning paper	1	
4	8-Pin cable	1	2500mm
5	Wire pipe	1	400mm
6	Exposed installation bracket	2	
7	Screwdriver	1	
8	Cable fixing bracket	2	
9	Screws bag	1	
10	Installation instructions	1	



Kouterbaan 63 - 1840 Malderen België

T: +32(0)52 43 02

E: [info@lockcontrol.be](mailto:info@lockcontrol.be)

W: [www.lockcontrol.be](http://www.lockcontrol.be)